



# TRANSPORTATION

*T. Baker Smith (TBS) is recognized for consistently delivering sustainable projects that enhance and protect our communities and our way of life...* The key to the longevity of our firm is founded in our core values ingrained in the team of associates who routinely service our clients with relentless dedication to responsiveness and quality. Leveraging superior, integrated services and leading-edge technology, TBS' award-winning team of professionals take personal pride in developing customized solutions to spectrum of challenges our clients face.



## TRANSPORTATION SOLUTIONS

### + Roadway Design

- Interstate Widening
- New Corridors
- Roundabouts
- Intersection Improvements

### + Bridge Design

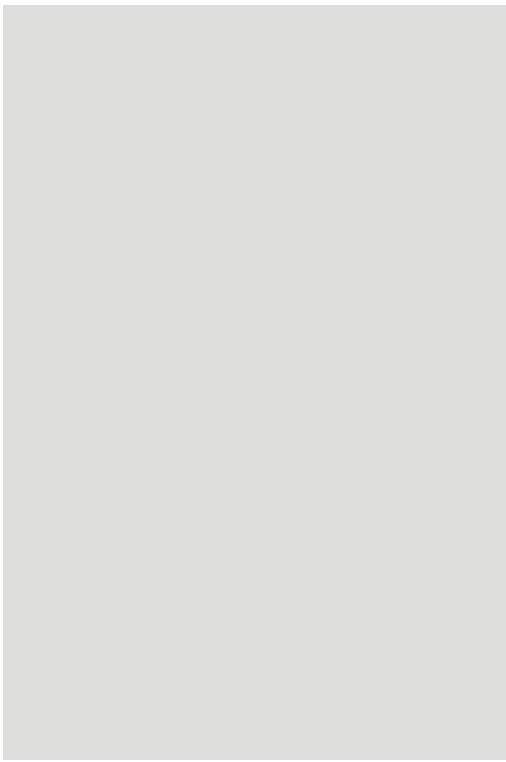
- Bridge Replacement
- In-Service Inspection (NBI)
- Load Rating
- Bridge Rehabilitation

### + Surveying

- Topographic/Hydrographic
- Property and Right of Way Mapping
- 3D Laser Scanning
- Subsurface Utility Engineering

### + Environmental

- Transportation Planning
- NEPA Documents
- Wetlands/T&E Species
- Phase I ESA





### I-12 Widening (US190 to LA 59)

TBS is serving as the prime consultant for LADOTD on this interstate widening project which consists of approximately four miles of interstate widening to the median side in St. Tammany Parish, LA. Upon completion, the project will include three lanes in both the westbound and eastbound directions. The interstate segment will include concrete median barrier and cable barriers in forested median areas. The project also includes the widening and rehabilitation of eight bridge sites ranging in structure type from reinforced concrete slab spans to AASHTO Type III prestressed girders and steel plate girders. TBS performed roadway design, including widening and reconstruction; design of bridge widening for the Pontchitalawa Creek and Tammany Trace bridges; bridge load rating; environmental support; level 4 traffic management plans; and associated tasks. The total project cost is estimated at \$65 million.



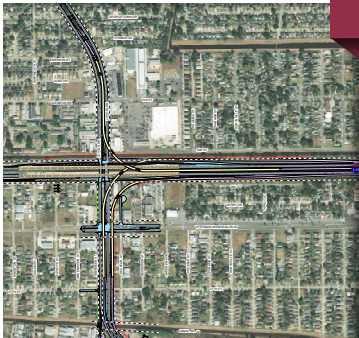
### Bayou Gardens Boulevard Extension (LA 660 to LA 316)

The Bayou Gardens Extension project is a continuation of two previous state DOT projects which initially developed Bayou Gardens Blvd. in Houma, LA as an east/west route that interconnected existing north/south routes in the state network. Bayou Gardens Blvd. is a 4-lane urban highway with a raised median which previously terminated at a 3-legged intersection. The Bayou Gardens Extension project provides a connection between LA Hwy 660 and LA Hwy 316 improving regional mobility, hurricane evacuation, and promoting additional economic development. Prior to the project, motorists detoured approximately six miles on narrow, two-lane roadways with load posted bridges. The overall length of the project is 1.6 miles of two-lane roadway and included a 140-foot-long curve bridge over St. Louis Bayou. TBS was responsible for all topographic surveying, subsurface utility engineering (SUE), embankment surcharge monitoring, roadway and drainage design, pavement design, bridge design, project management, environmental permitting, utility design, utility permitting and coordination, construction contract administration, and construction project representation.



### LADOTD Off-System Bridge Replacement Program

Since the 1980's, TBS has served as a prime consultant to LADOTD for the replacement of off-system bridges throughout the State of Louisiana. These bridge replacement sites include a range of structure types varying from single span concrete or timber to AASHTO girders to movable swing or lift spans. Over the years, TBS has performed transportation design and related services for nearly forty (40) structures for LADOTD which are off of the state system. TBS' services generally include topographic and hydrographic surveys; property surveys and right of way mapping; roadway design; bridge design; subsurface utility engineering (SUE); and the production of preliminary and final plans. TBS' environmental services generally included wetland delineations, USACE permit drawings, NEPA document preparation (Categorical Exclusion) and agency coordination. TBS has also provided Construction Engineering and Inspection (CE&I) support services as part of this program. Project sizes have ranged from \$500,000 to over \$10 million.



### I-10/Loyola Interchange Improvements

The I-10/Loyola Interchange in Jefferson Parish, LA will become the new primary access point to the new north terminal at Louis Armstrong New Orleans International Airport (MSY) in Kenner, LA. In order to accommodate this major change in traffic, an Interchange Modification Report (IMR) was conducted to determine the interchange improvements alternative designs as well as an Environmental Assessment (EA) to clear the project environmentally and utilize Federal funding. TBS performed environmental services and conceptual level interchange design for the IMR Tier II and Tier III analysis including various interchange types such as a SPUI, Directional Ramp, Partial Cloverleaf and Diverging Diamond (DDI). TBS prepared the majority of the EA document and also performed environmental field services such as wetlands, T&E species. TBS also prepared the Line and Grade study which included preliminary roadway and bridge plans for several alternatives and the selected alternative, which included a 4-level "stack", directional interchange using prestressed concrete and steel plate girders. A FONSI was secured by the project team from the FHWA for this mega project (estimated at \$150 Million) in less than 13 months.

#### LOCATIONS

Lafayette, Louisiana.....	337.735.2800
Baton Rouge, Louisiana.....	225.744.2100
Thibodaux, Louisiana.....	985.446.7970
Covington, Louisiana.....	985.302.0730
Metairie, Louisiana.....	504.323.3460
Houston, Texas.....	281.240.0113
Corpus Christi, Texas.....	361.334.5719
Galveston, Texas.....	409.220.1669
Jackson, Mississippi.....	985.868.1050

#### CORPORATE HEADQUARTERS

412 South Van Avenue  
P. O. Box 2266 (70361)  
Houma, Louisiana 70363  
Tel: 985.868.1050



Scan for more information

