



ENGINEERING

TBS is an integrated, comprehensive civil engineering firm offering services for just about any project that improves our way of life. From designing roadways and bridges to engineering new concepts to saving our coastline to developing constructible site designs for our schools, hospitals, and neighborhoods, TBS has the engineering professionals and resources to get the job done. Contact our civil engineering firm today to get your project started.



ENGINEERING SOLUTIONS

+ Planning Services

TBS utilizes a holistic approach to development, coordinating the big picture and focusing on how each service area can best serve our clients' needs.

+ Civil & Structural Engineering & Design

Our engineering and design services include flood protection and drainage, hydraulic and hydrologic studies, roads and bridges, utilities, and site developments.

+ Coastal Science Engineering & Design

TBS provides solutions that balance the need for coastal restoration and flood protection.

+ Landscape Architecture

Landscape architecture at TBS ranges from the design of high-level multi-use sites to small intimate spaces.

+ Facility Engineering

TBS offers engineering and design for the upstream oil and gas exploration and production facilities, midstream pipeline and facilities, downstream refining facilities, and other manufacturing facilities.

+ Construction Engineering & Inspection

TBS offers a broad range of construction inspection and quality control services to our clients for coastal restoration, flood protection, transportation, utilities, and land development projects.

+ Program Management

TBS Program Management services include schedule development and analysis, design oversight and management, document control, cost estimating, and financial controls.



Southdown Elementary

TBS was part of a larger team tasked with designing the new school. TBS coordinated seamlessly with the design team, contractor, and school board to deliver the project effectively. TBS was in responsible charge of the site drainage design, paving and grading design, sewer design, gas utility design, domestic water design, and fire water design. In addition to these typical site design tasks, special considerations were employed in the project design to match the existing conditions of the stadium and historic gymnasium and to protect the live oak trees scattered about the property.



Thibodaux Regional Wellness Center

TBS performed the necessary permitting as well as annexation, rezoning, and subdivision to move the project into design. Once in the design phase, TBS provided the civil site package for the initial 20-acre development, ensuring that civil LEED requirements were instituted and the initial budget was not exceeded. As a member of this community and a promoter of healthy lifestyles, TBS is proud to have been a part of this state-of-the-art and first of its kind Wellness Center in the state of Louisiana and our community of Thibodaux, LA.



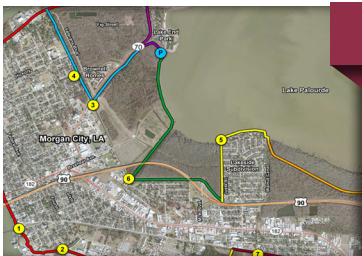
Thompson Road Extension

TBS performed topographic surveying, roadway and bridge design, major utility relocation design and coordination, and construction administration and inspection for the 2.7 miles of two-lane highway, which included a 180-foot-long bridge and turn lane improvements on existing roadways. Notable design features include an armored channel bottom to withstand the discharge of the adjacent pump station and implementation of a wick drain settlement program to minimize bridge end bent settlement.



I-12 Widening (US190 - LA 59)

TBS is serving as the prime consultant for LADOTD on this interstate widening project which consists of approximately four miles of interstate widening to the median side in St. Tammany Parish, LA. Upon completion, the project will include three lanes in both the westbound and eastbound directions. The interstate segment will include concrete median barrier and cable barriers in forested median areas. The project also includes the widening and rehabilitation of eight bridge sites ranging in structure type from reinforced concrete slab spans to AASHTO Type III prestressed girders and steel plate girders.



Morgan City Levee Improvements

TBS provided a preliminary project report to identify the most cost-effective alignments and features for an accredited levee system surrounding Morgan City. The first two phases of this project include approximately seven miles of levee reconstruction from the East Atchafalaya Basin Protection Levee to the Syracuseville Levee, which ties into the existing railroad tracks in Morgan City. TBS is currently designing the levee improvements necessary for FEMA accreditation. projects were conducted on-time, within budget, and without re-fabrication requirements.

LOCATIONS

Lafayette, Louisiana.....	337.735.2800
Baton Rouge, Louisiana.....	225.744.2100
Thibodaux, Louisiana.....	985.446.7970
Covington, Louisiana.....	985.302.0730
Metairie, Louisiana.....	504.323.3460
Houston, Texas.....	281.240.0113
Corpus Christi, Texas.....	361.334.5719
Galveston, Texas.....	409.220.1669
Jackson, Mississippi.....	985.868.1050

CORPORATE HEADQUARTERS

412 South Van Avenue
P. O. Box 2266 (70361)
Houma, Louisiana 70363
Tel: 985.868.1050



Scan for more information

